

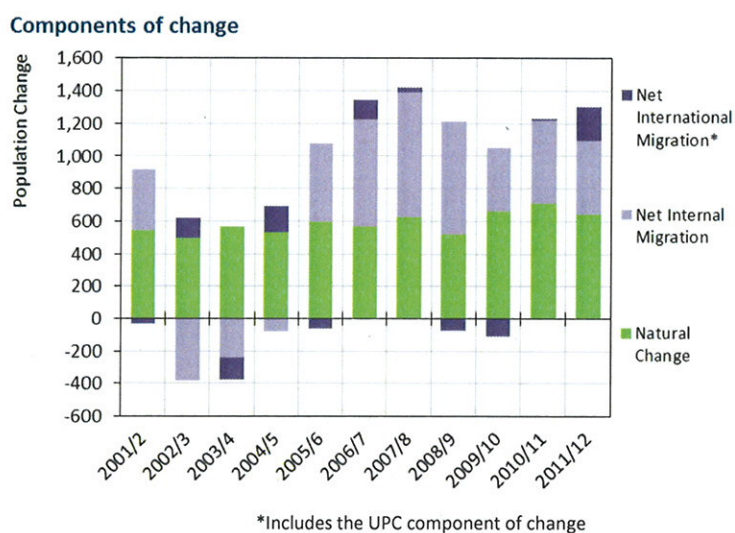
## 4. Area Profiles

### Guidelines

- 4.1 For each of the EPOA local authorities, the new demographic evidence is summarised: first with an illustration of the 'components of change which have driven population growth between 2001-2012 (making an assumption that the UPC element is encapsulated within the international migration component); and secondly with a table of dwelling growth outcomes from the suite of scenarios that has been evaluated.
- 4.2 A more detailed summary of the results of each scenario forecast is provided in the form of a chart and an accompanying table of statistics. The chart illustrates the trajectory of population change resulting from each scenario. The table summarises the change in population and household numbers from 2012-2037 that result from each scenario.
- 4.3 The scenarios are ranked according to the estimated level of population change over the forecast period. Each table illustrates the average annual net migration associated with the population change, plus the expected average annual dwelling and jobs growth based on the assumptions used in each scenario.
- 4.4 Scenario results are presented in two separate illustrations, each relating to the application of different household headship rates. The 'Option A' results use the CLG 2011-based headship rates and the 'Option B' results use the 2008-based headship rates.
- 4.5 In each case, the ONS 2011-based interim population projection (SNPP-2011) is included in the chart illustrations to enable comparison with other scenarios. It has a shorter projection horizon (2011-2021) and different assumptions to the other scenarios, so is excluded from the results table.

## East Hertfordshire – scenario summary

- 4.144 Natural change has been the most significant driver of population growth since 2001/02. Growth through internal migration has also been important but this has varied from a net loss in 2002/03-2004/05 to a net gain thereafter. Over the course of the 2001-2012 period international migration has contributed a relatively small amount to the average annual net increase or decrease in population.



- 4.145 The 'SNPP-2010' scenario suggests 23.3% population growth when extrapolated to 2037. Using the historical evidence on growth to set migration assumptions produces population forecasts that are lower than the 'SNPP-2010'. The 'Migration-led 10yr' scenario records a growth of 14.1%, whereas the 'Migration-led 5yr' scenario records a population increase of 20.2%, reflecting higher net migration impacts in the later years of the last decade.
- 4.146 The EEFM 'Jobs' and 'Employed people' scenarios imply a population increase that is higher than the 'Migration-led' and 'SNPP-2010' alternatives, driven by anticipated jobs growth. Population growth estimated by these scenarios is 31.8%-34.9% over the forecast period.
- 4.147 If the UPC component of historical population change is ignored when calculating future migration assumptions, the forecast of population growth compared to the 'Migration-led' scenarios is increased. The 'Migration-led 10yr – X' scenario records a growth of 18.1%, whereas the 'Migration-led 5yr – X' scenario records a population increase of 24.1%, reflecting the differential impact of the UPC component upon historical population change.

- 4.148 The 'Natural Change' scenario, with no migration impact and with only births and deaths driving growth, results in a 7.7% population growth to 2037. The 'Net-nil' scenario which maintains a migration inflow and outflow but applies a zero migration balance, produces a slightly higher growth, with a 7.8% increase over the forecast period.
- 4.149 The application of the 2008-based household formation rates (Option B) results in a dwelling requirement that is approximately 11.3% higher than that associated with the application of 2011-based household formation rates (Option A) (this calculation excludes the 'Natural Change' and 'Net Nil' scenarios).
- 4.150 Considering the average of the A and B alternatives, suggests a dwelling requirement of 904-972 per year resulting from the EEFM scenarios, with the 'SNPP-2010' suggesting growth at 761 dwellings per year. The two 'Migration-led' scenarios record a range of outcomes that are lower than the EEFM alternatives, 511-648 dwellings per year.
- 4.151 The 'X' scenarios suggest higher dwelling growth than the 'Migration-led' scenarios which take account of UPC, in the range 592-726 per year.

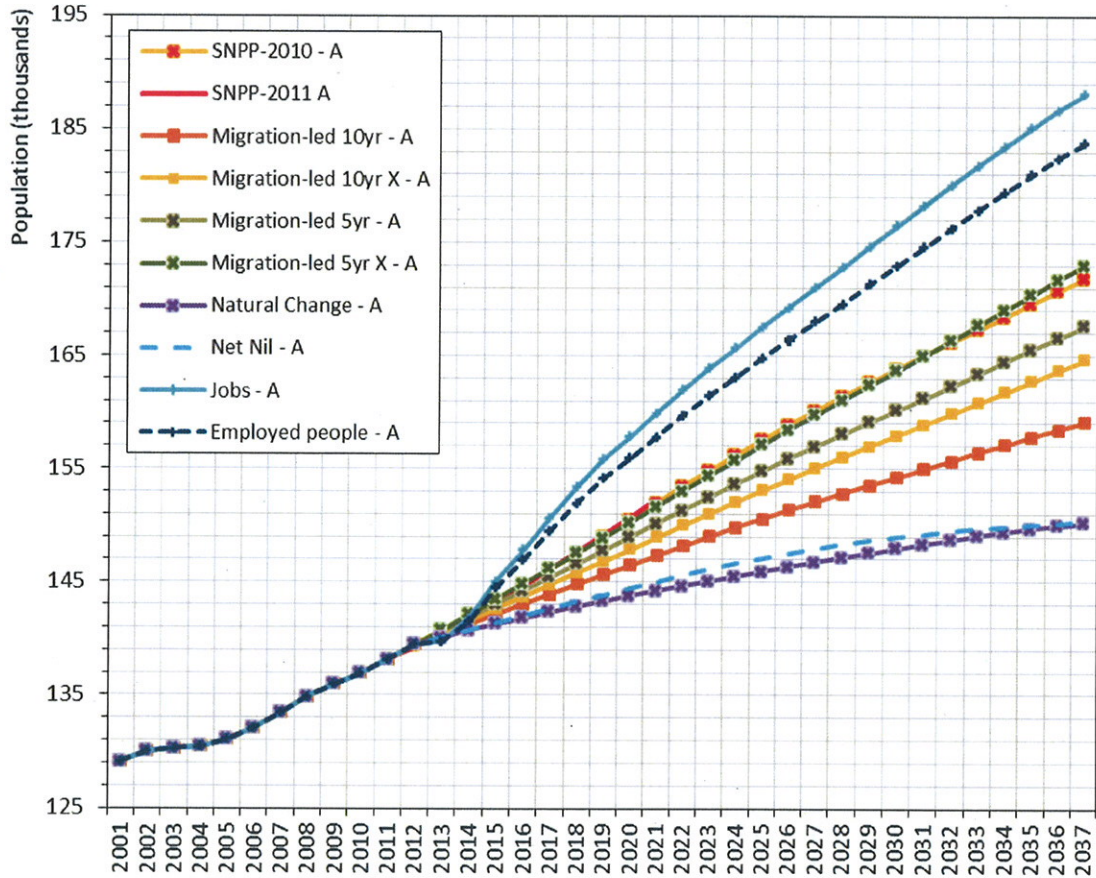
### Scenario dwelling growth summary

Scenario	Average annual dwelling requirement, 2012-37		
	Option A	Option B	Average
Jobs	928	1,016	972
Employed people	861	946	904
SNPP-2010	723	799	761
Migration-led 5yr X	687	766	726
Migration-led 5yr	610	685	648
Migration-led 10yr X	555	629	592
Migration-led 10yr	476	545	511
Net Nil	362	423	393
Natural Change	347	410	378

*Note: This project does not produce a recommended or preferred demographic forecast for any local authority area. Rather it presents a range of scenarios to inform further assessment and consideration by the individual local authorities. Indeed, local circumstances may dictate that certain scenarios are more appropriate than others for that local area. Nevertheless, for completeness all the scenarios are presented here.*

# East Hertfordshire

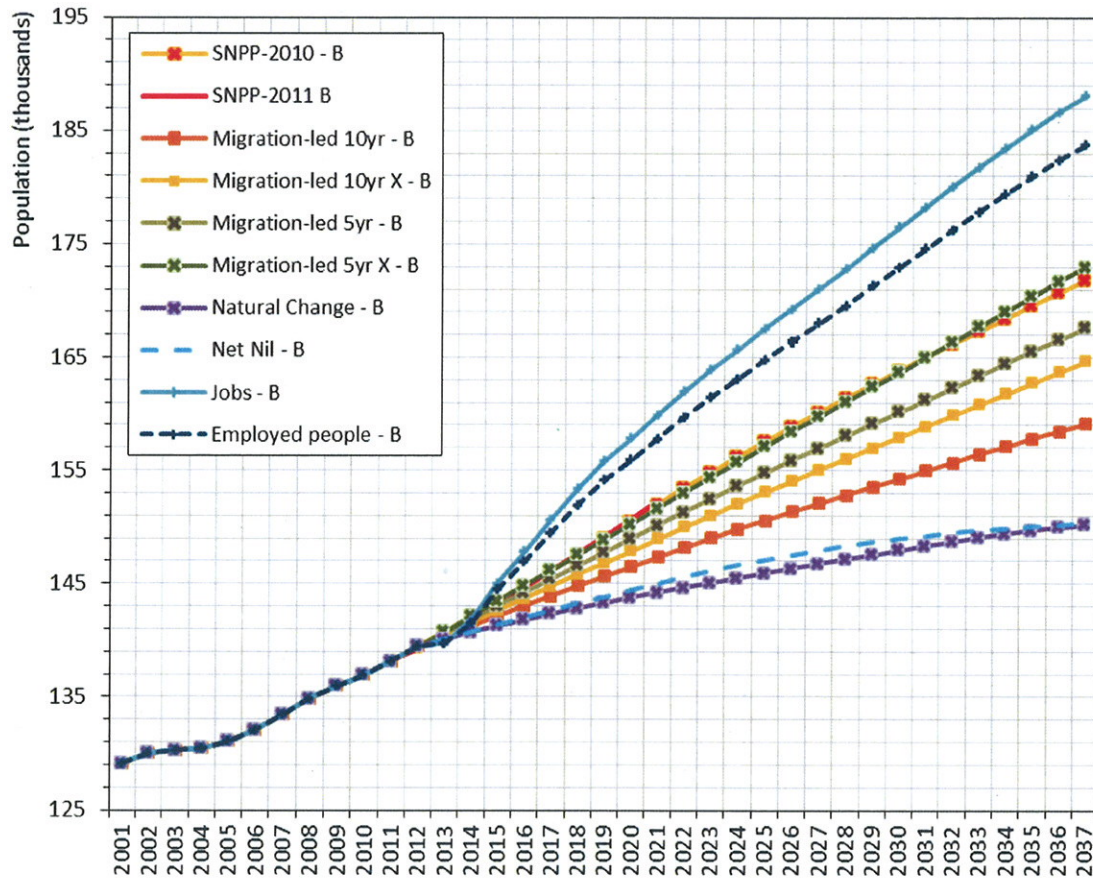
## Option A: 2011-based CLG household model



Scenario	Change 2012 - 2037				Average per year		
	Population Change	Population Change %	Households Change	Households Change %	Net Migration	Dwellings	Jobs
Jobs - A	48,665	34.9%	22,491	39.1%	1,251	928	540
Employed people - A	44,323	31.8%	20,862	36.3%	1,115	861	465
Migration-led 5yr X - A	33,554	24.1%	16,643	28.9%	774	687	277
SNPP-2010 - A	32,428	23.3%	17,524	30.3%	844	723	358
Migration-led 5yr - A	28,161	20.2%	14,797	25.7%	604	610	185
Migration-led 10yr X - A	25,174	18.1%	13,443	23.4%	482	555	133
Migration-led 10yr - A	19,669	14.1%	11,534	20.1%	308	476	37
Net Nil - A	10,901	7.8%	8,788	15.3%	0	362	-66
Natural Change - A	10,776	7.7%	8,401	14.6%	0	347	-167

# East Hertfordshire

Option B: 2008-based CLG household model



Scenario	Change 2012 - 2037				Average per year		
	Population Change	Population Change %	Households Change	Households Change %	Net Migration	Dwellings	Jobs
Jobs - B	48,665	34.9%	24,641	42.8%	1,251	1,016	540
Employed people - B	44,323	31.8%	22,943	39.9%	1,115	946	465
Migration-led 5yr X - B	33,554	24.1%	18,576	32.3%	774	766	277
SNPP-2010 - B	32,428	23.3%	19,364	33.4%	844	799	358
Migration-led 5yr - B	28,161	20.2%	16,612	28.9%	604	685	185
Migration-led 10yr X - B	25,174	18.1%	15,245	26.5%	482	629	133
Migration-led 10yr - B	19,669	14.1%	13,217	23.0%	308	545	37
Net Nil - B	10,901	7.8%	10,262	17.8%	0	423	-66
Natural Change - B	10,776	7.7%	9,933	17.3%	0	410	-167